



PlayStation

NTSC U/C

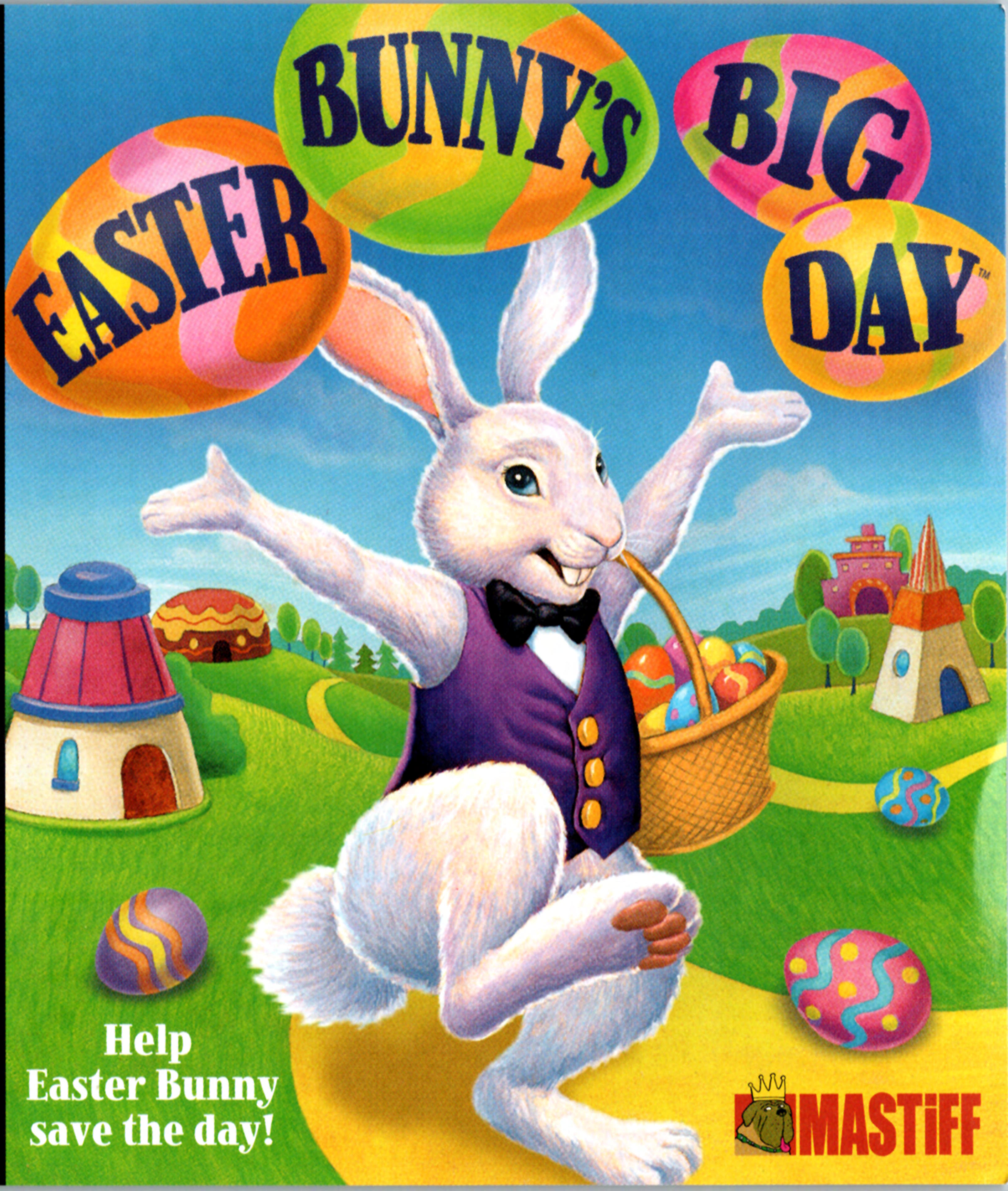
PlayStation

EVERYONE



CONTENT RATED BY ESRB

SLUS-01551



EASTER

BUNNY'S

BIG

DAY

Help  
Easter Bunny  
save the day!





## **WARNING: READ BEFORE USING YOUR PLAYSTATION® GAME CONSOLE.**

A very small percentage of individuals may experience epileptic seizures when exposed to certain light patterns or flashing lights. Exposure to certain patterns or backgrounds on a television screen or while playing video games, including games played on the PlayStation game console, may induce an epileptic seizure in these individuals. Certain conditions may induce previously undetected epileptic symptoms even in persons who have no history of prior seizures or epilepsy. If you, or anyone in your family, has an epileptic condition, consult your physician prior to playing. If you experience any of the following symptoms while playing a video game – dizziness, altered vision, eye or muscle twitches, loss of awareness, disorientation, any involuntary movement, or convulsions – IMMEDIATELY discontinue use and consult your physician before resuming play.

## **WARNING TO OWNERS OF PROJECTION TELEVISIONS:**

Do not connect your PlayStation game console to a projection TV without first consulting the user manual for your projection TV, unless it is of the LCD type. Otherwise, it may permanently damage your TV screen.

## **USE OF UNOFFICIAL PRODUCT:**

The use of unofficial products and peripherals may damage your PlayStation game console and invalidate your console warranty.

## **HANDLING YOUR PLAYSTATION DISC:**

- This compact disc is intended for use only with the PlayStation game console.
- Do not bend it, crush it or submerge it in liquids.
- Do not leave it in direct sunlight or near a radiator or other source of heat.
- Be sure to take an occasional rest break during extended play.
- Keep this compact disc clean. Always hold the disc by the edges and keep it in its protective case when not in use. Clean the disc with a lint-free, soft, dry cloth, wiping in straight lines from center to outer edge. Never use solvents or abrasive cleaners.



# Contents

Credits .....	1
Starting Up .....	2
Game Controls .....	3
Playing a Game .....	5
Easter Bunny's Big Adventure Mode .....	6
Jigsaw Puzzles .....	8
Customer Service and Warranty .....	9

# Credits

## **Mastiff**

**Producer**

Mika Hayashi

## **Seven Computerized Creations**

**Director**

Keizo Mochizuki

**Main Programmer**

Keisuke Nakano

**Jigsaw Programmer**

Nozomu Saitoh

**eye on**

**Graphic Production**

Shinjiro Kinebuchi

## **Art Design**

Hiroko Ogasawara

## **Atelier Bitol**

**Art Management**

Toru Nishiyama

**Illustration**

Taka Kato

## **Studio Zillion**

**Music**

Megumi Ebihara

## **Special Thanks**

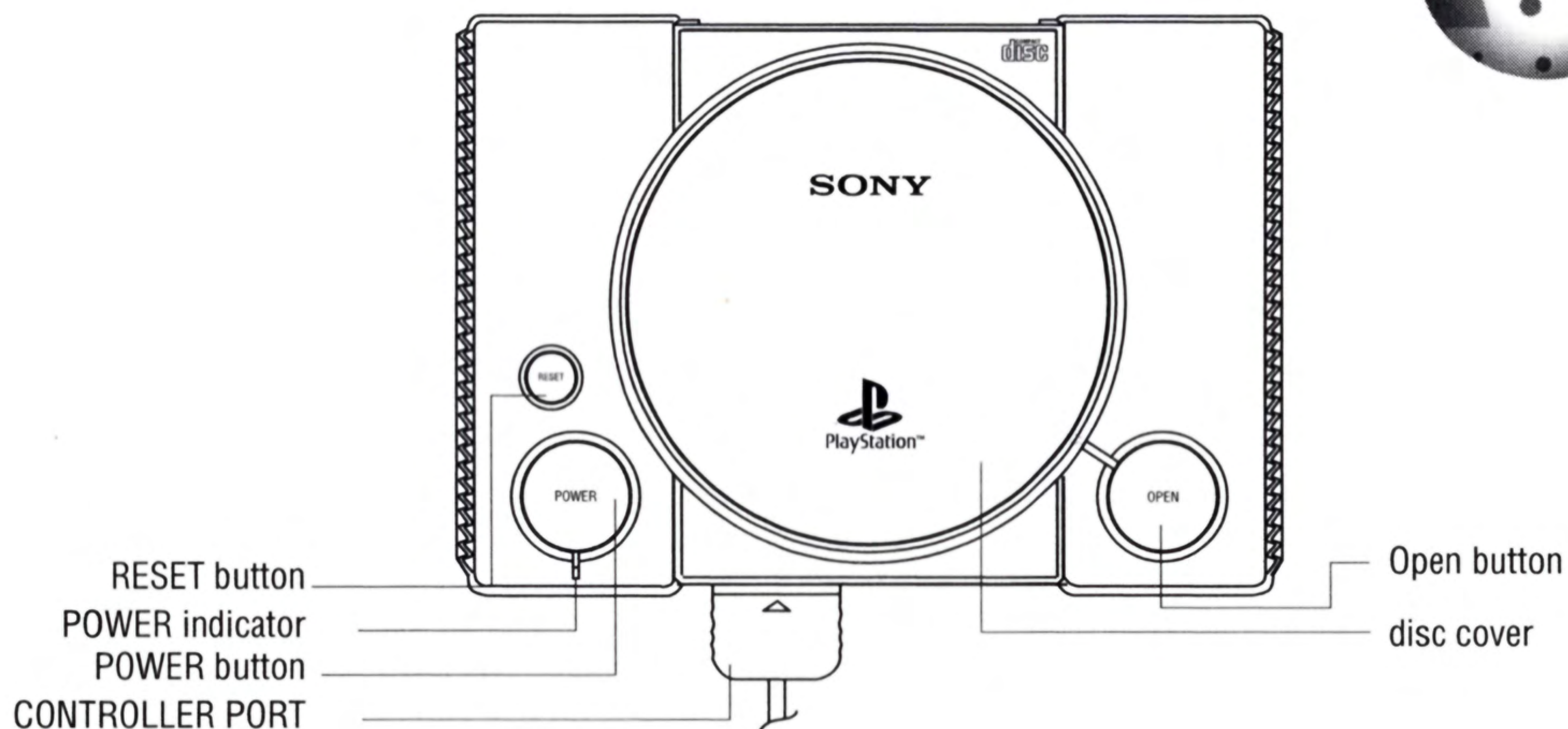
Naoki Iwai

Mieko Mochizuki Swartz

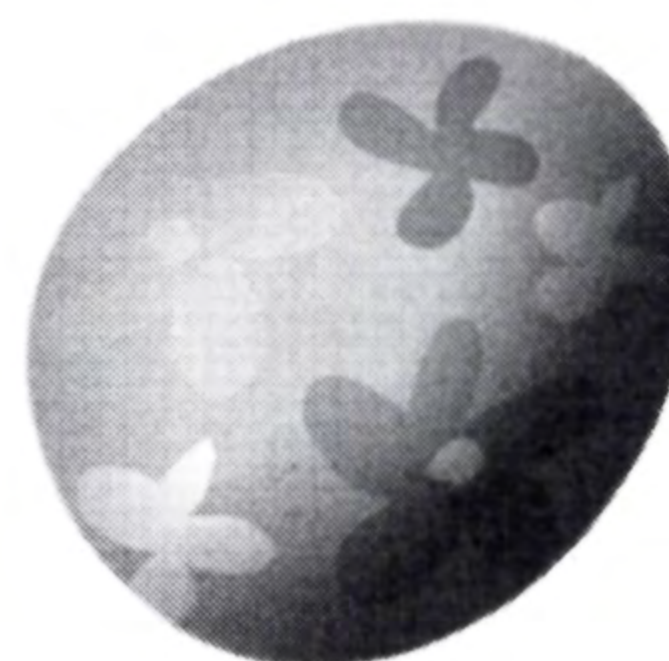




# Starting Up



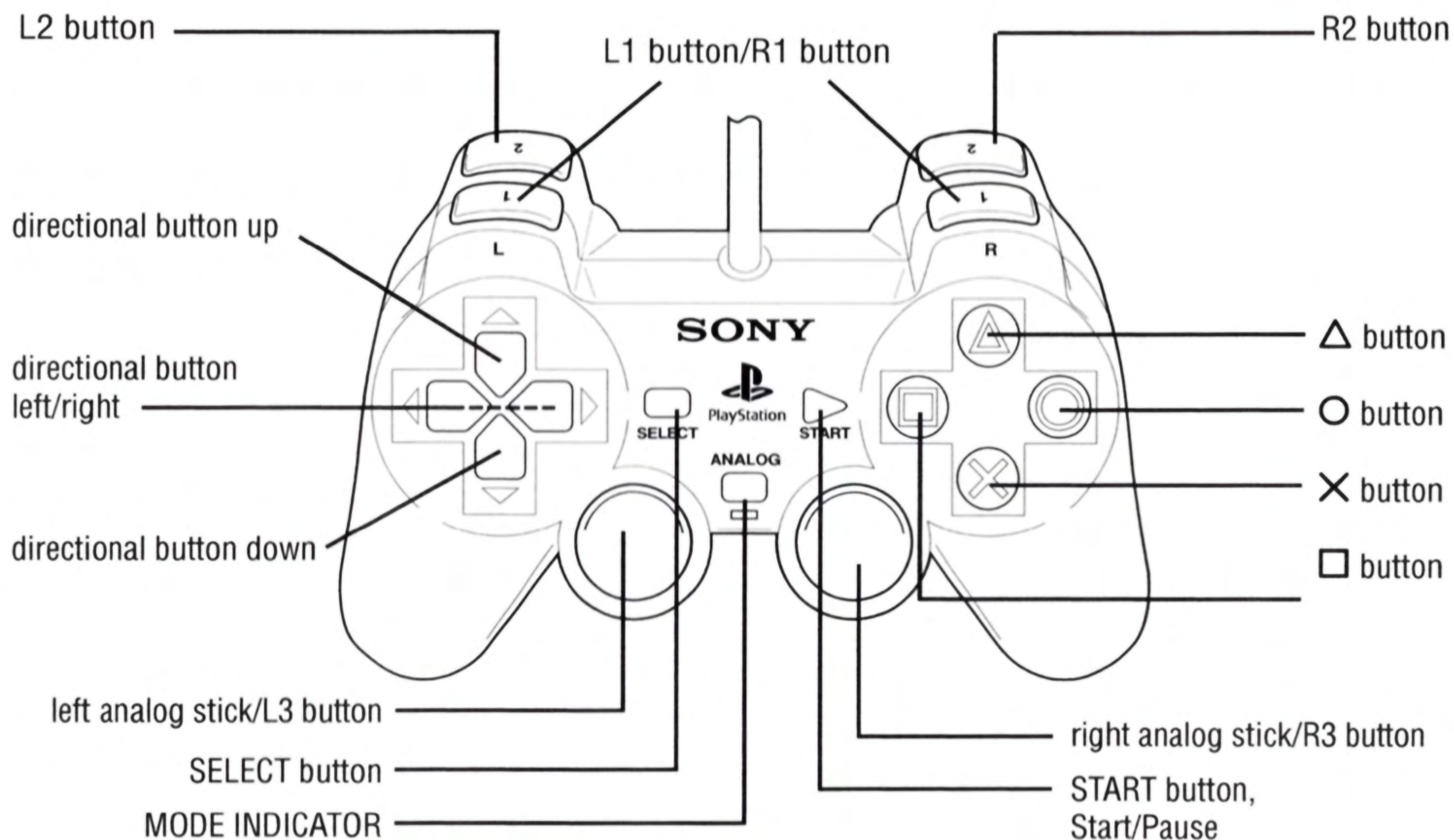
**Set up your PlayStation® game console according to the instructions in its Instruction Manual. Make sure the power is off before inserting or removing a compact disc. Insert the **Easter Bunny's Big Day™** disc and close the disc cover. Insert game controllers and turn on the PlayStation® game console. Follow on-screen instructions to start a game.**





# Game Controls

## DUALSHOCK® analog controller



**To select menu options, use the directional buttons to navigate through the menu options, highlight the desired option, and press the × button to accept. Press the △ button to cancel or return to the previous menu.**



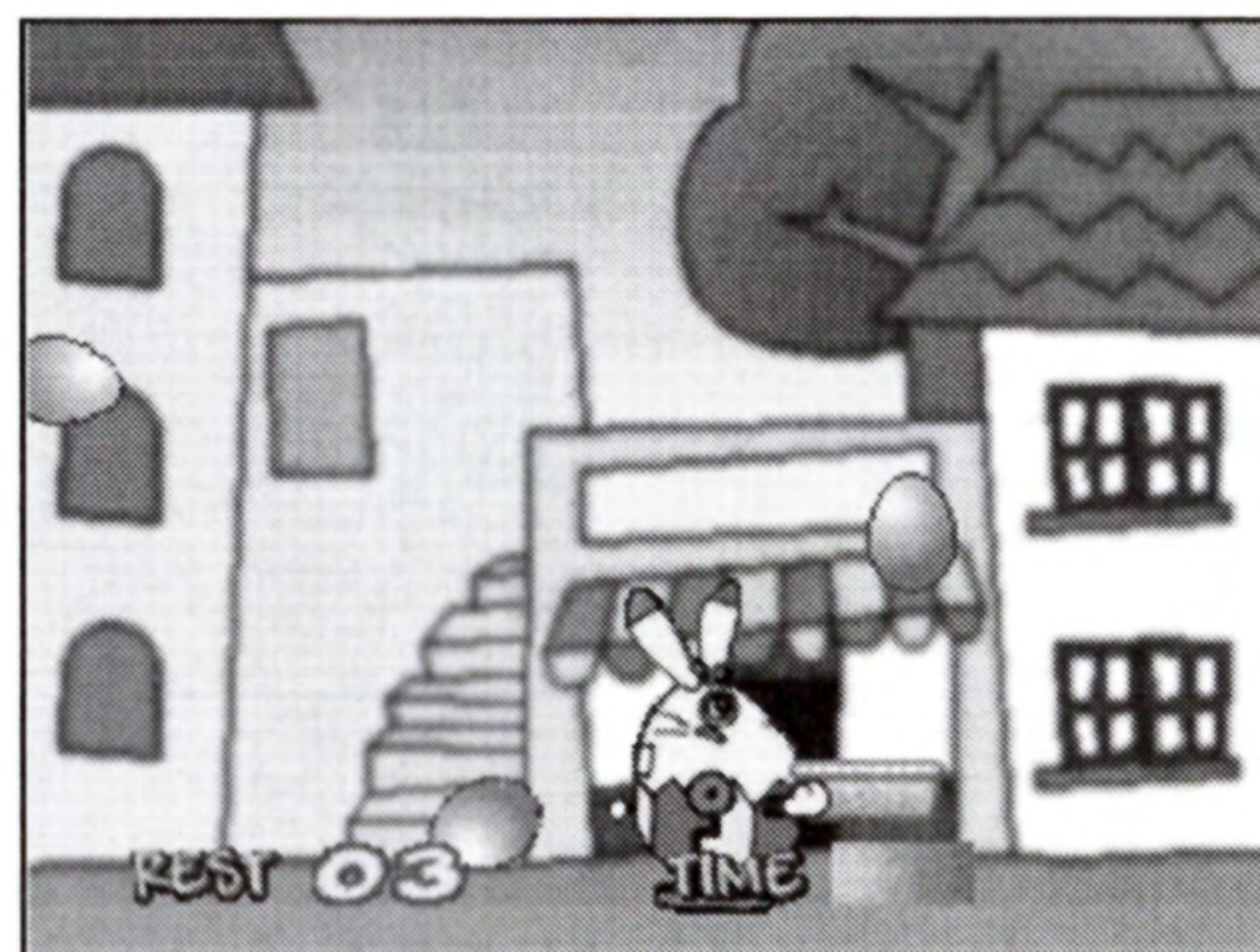
## Controls for Jigsaw Puzzles



Directional buttons or left stick	Move the cursor or pieces.
× button	Pick up and release pieces.
□ button	Increase the speed of the cursor.
L1 button	Rotate a piece to the left.
L2 button	Erase lines between pieces.
R1 button	Rotate a piece to the right.
R2 button	Display the puzzle picture.
START button	Pause the game and display the Help menu.

## Controls for Egg Catch

Use the right and left directional buttons or the left stick to move Robo Rabbit and catch the falling eggs with his basket.

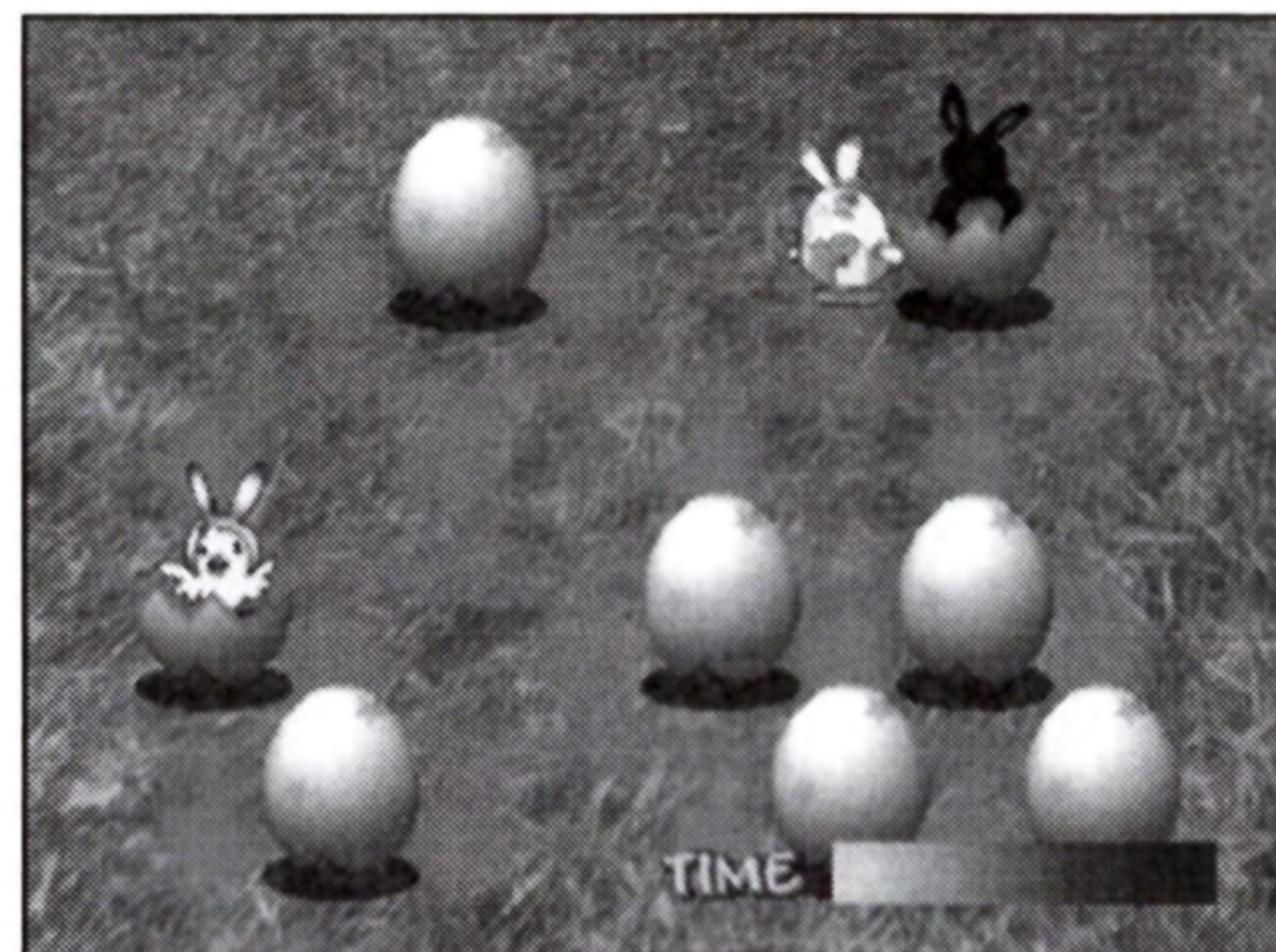




## Controls for Egg Match

Use the directional buttons or the left stick to move Robo Rabbit.

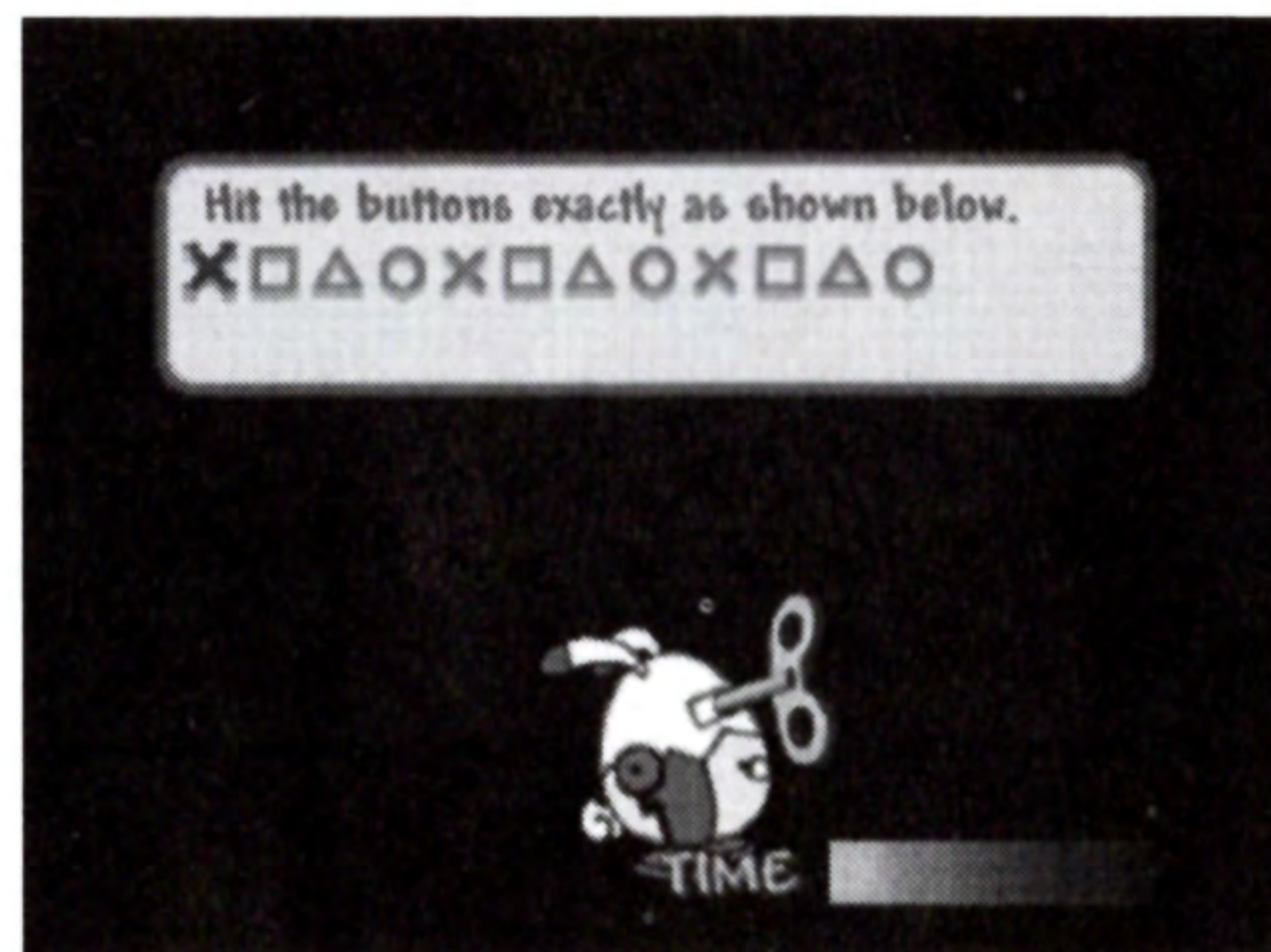
Use the X button to crack the eggs from a side.



## Controls for Egg Delivery

Press the button with the same symbol as you see on the screen.

If you see an X on the screen, press the X button. If you see a □, press the □ button and so on.



## Playing a Game

### Start a Game

Press the **START** button at the title screen to start Easter Bunny's Big Day.

### Game Modes and Options

#### Easter Bunny's Big Adventure Mode:

Play through a bunch of jigsaw puzzles and action games to win eggs. When you

have enough eggs, help deliver them to the Easter Village school.





**Easter Bunny's Puzzle Palace Mode:** Play the jigsaw puzzle of your choice. There are several special settings to make the puzzles more challenging if you want. **Puzzle Pieces** lets you choose the number of pieces in the puzzle. The more pieces you choose, the harder the puzzle.

If **Piece Rotation** is turned on, some pieces in the pile will be facing in the wrong direction. Turn the pieces so they fit correctly using the **L1** and **R1** button. You can also choose **1 Player** or **2 Players**.

**Album:** View the puzzles you have already completed in full screen, high resolution mode.

**Music & Sound:** Adjust the music and sound volume.

**Load:** Load saved game data.



## **Easter Bunny's Big Adventure Mode**

To win Easter Bunny's Big Adventure Mode, you need to collect Easter Eggs and then help deliver them to your friends waiting at Easter Village school. You'll get one Easter Egg for every action game level and jigsaw puzzle you finish within the time limit.

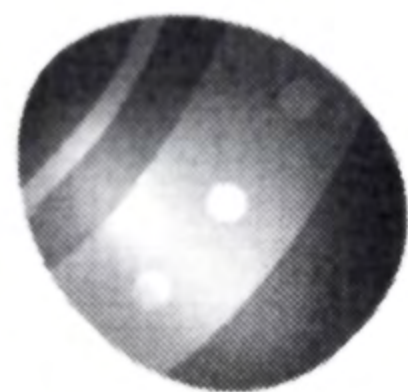


## Starting Easter Bunny's Big Adventure Mode

Begin by selecting a difficulty level: Easy, Normal, Hard or Expert.

Choose a building to play. When you first enter Easter Village, you'll notice a number of buildings such as a candy store, toy shop, green grocer and a flower shop. At first, you'll only be able to enter one building. When you win a game or a puzzle, the next building will open up. Give it your best shot!

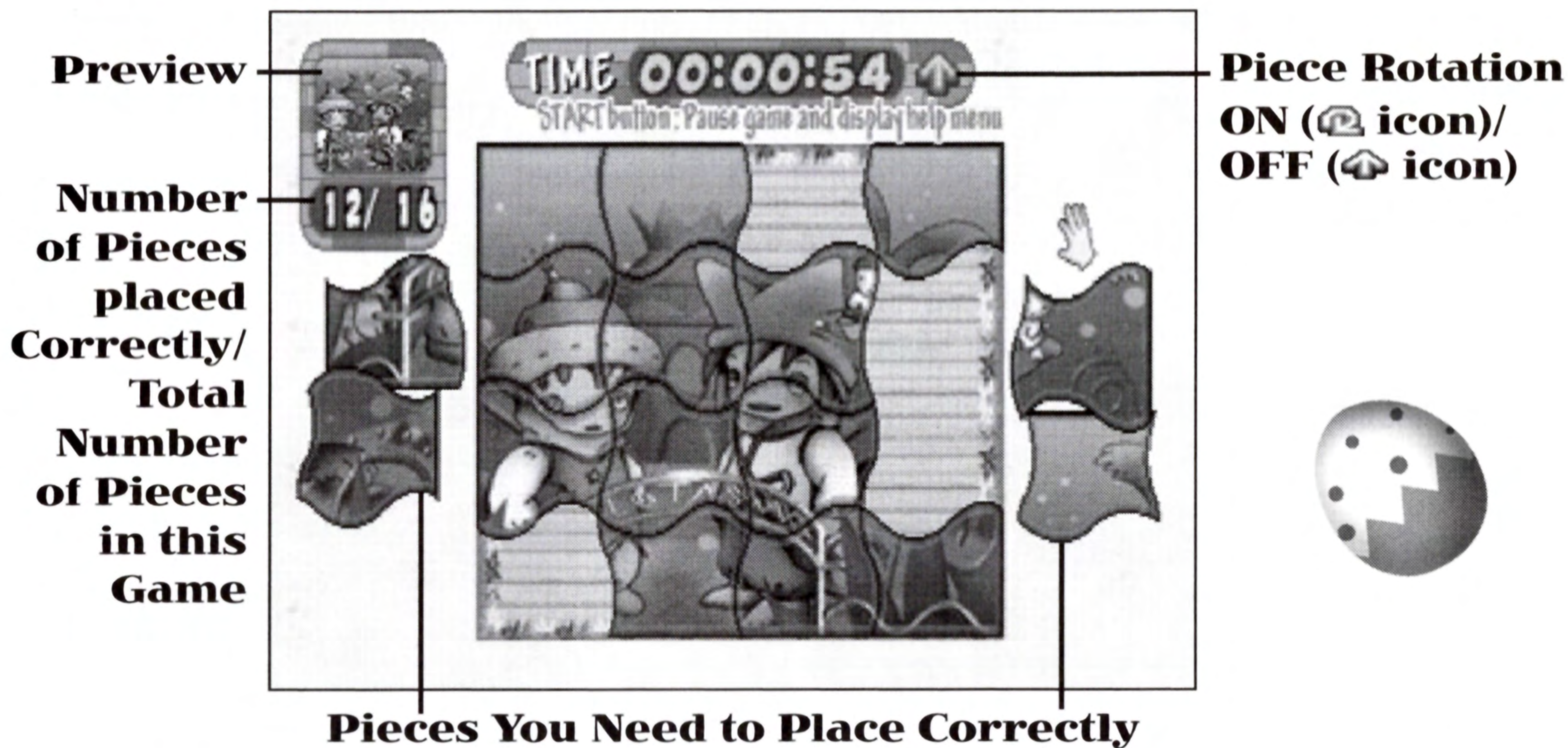
Once you enter a building, you'll have a choice of action games and puzzles. You don't need to finish every activity at each location. Once you've earned enough eggs, you get to help deliver them to all the good boys and girls in the Easter Village school.





# Jigsaw Puzzles

## Game Screen



**Note:** There is a time limit for Easter Bunny's Big Adventure Mode. The remaining time is displayed at the top center of the screen.

There is no time limit for Easter Bunny's Pleasure Palace Mode. The timer at the top center of the screen displays the amount of time you have played.

## Help

If you press the **START** button while completing a puzzle, the game will stop and the menu will be displayed. Select **Help** if you don't know where to put the remaining pieces.





## **CUSTOMER SERVICE AND WARRANTY**

Mastiff LLC (“Mastiff”) warrants to the original purchaser of this product that the medium on which this program is recorded is free from defects in materials and workmanship for a period of ninety (90) days from the date of purchase.

This warranty shall be void and moot if the defect in this Mastiff product has arisen through neglect, abuse or any attempt to use the product other than as specified in this manual. This warranty is in lieu of all other warranties whether written or verbal, and no other representations or claims of any nature shall be binding on or obligate Mastiff. All implied warranties, including but not limited to the warranties of merchantability and fitness for a particular purpose are waived to the extent permitted by applicable law. In no event will Mastiff be liable for incidental or consequential damages resulting from possession, use or malfunction of the Mastiff product.

Some states do not allow limitations as to how long an implied warranty lasts and/or exclusions or limitations of consequential damages, so the above limitations and/or exclusions of liability may not apply to you. This warranty gives you specific legal rights, and you may also have specific legal rights which vary from state to state.

**Repair Service and Technical Support** – If your game disc requires repair or replacement please contact Customer Service by email at **customerservice@mastiff-games.com** or phone at **415-979-9700**.

Visit Mastiff online at **www.mastiff-game.com**

Mastiff LLC, 1819 Polk Street, #353, San Francisco, CA 94109

(2003) Mastiff LLC, all rights reserved. Mastiff and the Mastiff logo are trademarks of Mastiff LLC.





Mastiff, LLC, 1819 Polk Street, Suite 353, San Francisco, CA 94109

© 2003 Mastiff. Published and distributed by Mastiff. Easter Bunny's Big Day is a trademark of Mastiff. Developed by Seven Computerized Creations. All rights reserved. All other trademarks and trade names are the properties of their respective owners.

Licensed by Sony Computer Entertainment America for use with the PlayStation game console. PlayStation and the PlayStation logos are registered trademarks of Sony Computer Entertainment Inc. The ratings icon is a registered trademark of the Interactive Digital Software Association. Manufactured and printed in the U.S.A. THIS SOFTWARE IS COMPATIBLE WITH PLAYSTATION GAME CONSOLES WITH THE NTSC U/C DESIGNATION. U.S. AND FOREIGN PATENTS PENDING.

